



## UNBOUND PERMEABLE DRIVEWAY

The City of Maple Ridge's permeability requirement led project builder, Jent Construction, to look for an alternative jointing method for a recent residential project installation.

Eager to avoid the common pitfalls and maintenance headaches of loose grit jointing, the team chose to use ROMEX® Flex Joint as this allowed for the beautiful aesthetic appearance that the client desired, whilst meeting the crucial City permeability requirements.



**ROMEX® Product(s)**  
Flex Joint



**Application**  
Permeable & flexible jointing for unbound assembly



**Location**  
Maple Ridge, British Columbia



**Year**  
2020



**Landscape Architect**  
N/A



**Client**  
Jent Construction/ Flower Stream Landscaping



**URL**  
<https://www.flowerstreamlandscape.com/>  
<https://www.jentconstruction.ca/>



**Categories**  
Residential



## Product Selection

Permeability, durability and reduced future maintenance were top priorities for this project. The ROMEX® Flex Joint provides exceptional value for money in meeting this criteria, allowing the paving stones to be laid unbound over open graded base which provides great compaction and the ability for the water to flow through the paver joints and back to the ground. The unique, flexible nature of the ROMEX® Flex Joint product allows for up to 10% movement meaning the pavers can be laid unbound and be subjected to a small amount of movement and rotational twist. This one of a kind jointing product made it the perfect choice for this project and exceptional value for money, whilst meeting all of the project criteria.

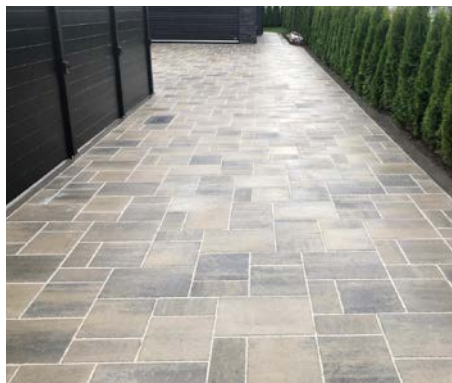
### Project Needs

1. A permeable surface capable of handling BC's annual rainfall
2. A durable system that would reduce maintenance and allow regular pressure washing to take place
3. Flexibility to prevent cracking of the jointing mortar with regular vehicle use
4. Value for money

### Project Solution

The ROMEX® Flex Joint product is the only permeable yet flexible jointing product on the global market. The unique properties of Flex Joint allow for the paved surface to seamlessly work with vehicle loading and the environment, with every joint essentially acting as a permeable control joint. The homeowner is now able to enjoy a highly functional, low maintenance surface with the aesthetics which they desired for years to come. With stormwater management and jointing failure traditional headaches for designers and installers, the Flex Joint effectively solved these issues by providing peace of mind and a fantastic return on investment for years to come.

## Project Gallery



### ROMEX® Canada

260 Riverside Drive,  
North Vancouver,  
BC. V7H 2M2

info@romexcanada.com  
www.romexcanada.com  
Hotline 1-604-913-1579

