



CANADA PLACE

Canada Place is a world-renowned tourist destination in Vancouver, BC.

Of the 9 million annual visitors to the city, 1 million of them arrive directly from the 200+ cruise ships that dock on its pier.

In 2016, the owners commissioned a renovation of the aging paving system and a new visual identity for the 'North Point' Plaza Deck, one of downtown's most popular public spaces.



ROMEX® Product(s)
Full RSG Paving System



Application
Revitalising the paving at the Canada Place



Location
North Point, Canada Place, Vancouver BC



Year
2017



Landscape Architect
Connect Landscape Architecture



Client
Port of Vancouver



URL
www.canadaplace.ca



Categories
Commercial



Product Selection

After rigorous analysis and testing, the client chose the full ROMEX® paving assembly, with ROMEX® TRASS-BED COMPOUND, ADHESION ELUTRIANT and ROMPOX® - D1 2-component resin grouting.

Project Needs

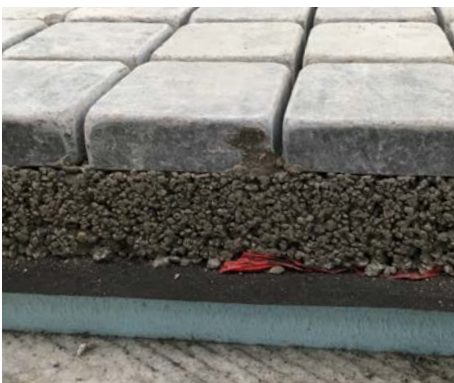
1. Limited space for paving assembly due to parking and offices underneath
2. Significant drainage for heavy rainfall and near-zero slope
3. Has to absorb huge movements of cruise ships docking against it
4. All the work had to be done during the off-peak winter months between cruise seasons

Only the permeable, resilient, and fast-installing solution from ROMEX® was able to solve all these problems, and meet the constraints of the project timeline.

Project Solution

The North Point plaza, the very northern tip of the Canada Place pier, was reopened after a renovation that redesigned the plaza with aesthetic upgrades and a new layout to make the space more event-friendly. The area that was renovated starts on both the west and east promenades immediately north of the 'FlyOver Canada' attraction and is distinguished by its new pattern of tiling. Upgrades included the removal of older planters, installation of new and more sustainable LED lighting, a parkette feature, a new stage at the northernmost tip, and new seating. Some of the events that are held on the plaza annually include Canada Day at Canada Place, Waterfront Cinema, Waterfront Zumba, and Christmas at Canada Place festivities. The previous plaza space design was completed in 2001 as part of the extension of Canada Place to accommodate a longer and additional berth for the cruise ship.

Project Gallery



ROMEX® Canada

260 Riverside Drive,
North Vancouver,
BC. V7H 2M2

info@romexcanada.com
www.romexcanada.com
Hotline 1-604-913-1579

